

Microcentrifuge - TurboFuge

Description

TurboFuge is a compact high-speed centrifuge with 24 or 36 positions and a speed of up to 21,400 x g.

The intelligent ventilation design keeps the chamber temperature stable and protects sensitive samples from overheating.

It offers many safety features that ensure reliable operation.

Specifications

- **Solid construction with metal chamber**
Provides stability and comprehensive protection in the event of rotor imbalance.
- Autoclavable aluminum rotor
- Withstands strong acids and alkalis and ensures a long service life
- **Motorized double locking of the lid**
Ensures that the lid is always securely locked when the rotor is running.
- **Intelligent imbalance detection**
The rotor imbalance sensor switches the centrifuge off immediately if a rotor imbalance is detected.
- **Lid drop protection**
The lid is held at 5-60 degrees to allow easy loading and unloading of the tubes.
- **Option**
Aerosol-tight metal rotor lid to prevent hazardous aerosols from escaping.
- The lid opens automatically after a run.
- **Alarm**
Generates a sound corresponding to the process.
- Smooth acceleration and deceleration time for sensitive cells
- **Counting up**
Counts the time after a run.
- **Short spin**
Short run at set speed (rpm) or gx force (rcf)
- **Display**
blue/red: Device in operation,
blue display: Lid open
- Very fast, but extremely quiet



TurboFuge



TurboFuge Display

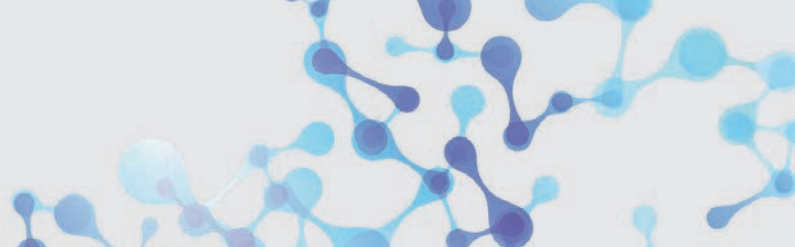
Easy of Use

LED display and graphic symbols show the status and settings of the centrifuge.

The functions are set simply by pressing the SYSTEM button.

Optical Display

- The clear blue or red backlighting indicates the current operating status.
- Clear lid open indicator in blue



Microcentrifuge - TurboFuge



Technical Data

Max. speed	15.000 rpm
Max. RCF	21.400 x g
Max. capacity	36 x 1.5/2.0 ml
Available rotors	R-2420F: 24 x 1.5/2.0 ml, Fix-angle R-3620F: 36 x 1.5/2.0 ml, Fix-angle
Acceleration/Deceleration time	15 sec / 90 sec
Ramps	9 s
Timer	30 s - 99 m, continuous mode
Safety	Metal chamber, aluminum rotor, motorized dual lock, imbalance detection, lid drop protection
Power supply	AC 100–240 V, 50/60 Hz
Power requirement	250 W max.
Dimensions (W x D x H)	290 x 480 x 260 mm
Weight without rotor	10 kg
Certifications	CE, RoHs
Item No.	109.1500

Optional Rotors



Rotor R-2420F left
Rotor R-3620F right