

Programmable Rotator MultiBio RS-24

Description

Programmable rotators perform multiple types of motion in one module. Microprocessor control allows performing not only Vertical rotation (1) of the platform, but also Reciprocal rotation (2) as well as Vibration (3). These three motion types can be performed separately, pairwise and in cycles, periodically repeating the sequence of three motion types.

Multi-Rotation option of RS-24 substantially expands possibilities and enhances efficiency of sample preparation for the examined materials and allows adjusting the mixing procedure according to the individual tasks.

During the stop mode the platform does not perform extra turnover and stops in a horizontal plane. Additionally there is a possibility of setting the plane with respect to which platform oscillates vertically or horizontally.

Applications

Programmable Rotator can be used for variety of applications in modern life science laboratories:

- Hybridization reactions
- Cell growing
- Soft extraction and homogenisation of biological components in solutions
- Binding and washing reactions of magnetic particles

Application in Incubator / Cold Room

Multi Bio RS-24 is suitable for operation in cold rooms, incubators (except CO₂ incubators) and closed laboratory rooms.

Requirements:

- Ambient temperature: +4°C up to +40°C
- A non-condensing atmosphere
- Max. relative humidity: 80%
(at temperatures up to 31°C, which decreases linearly to 50% relative humidity at 40°C)

Low voltage external power supply (12 V) provides electrical safety in humid environment.



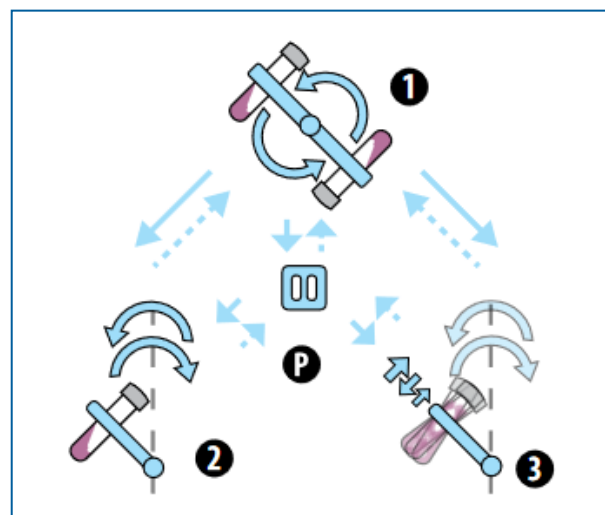
MultiBio RS-24 with platform PRS-5/12

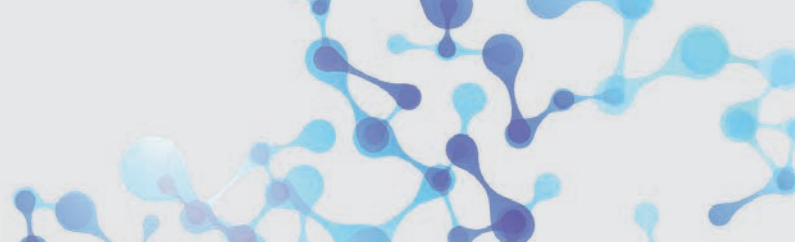


MultiBio RS-24 with platform PRSC-22

Programmable rotator provides three rotation types and pause


- ① vertical rotation
- ② reciprocal rotation (rocking motion)
- ③ vibration
- P pause

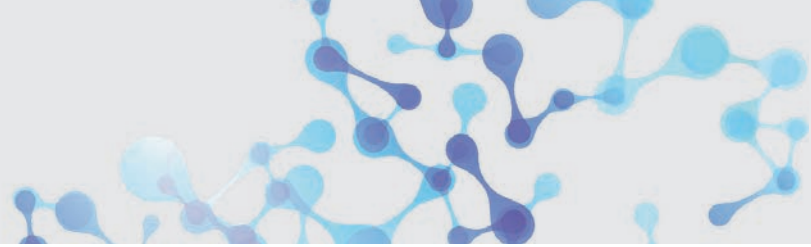




Programmable Rotator - MultiBio RS-24

Technical Data

Model	MultiBio RS-24
	
Order No. Multi Bio RS-24 incl. standard platform PRS-26	105.2380
① Vertical rotation	
Speed setting range	1 – 100 rpm (increment 1 rpm)
Rotation movement	360°
Time setting	0 – 250 s
② Recipokal rotation (rocking motion)	
Speed setting range	1 – 100 rpm (increment: 1 rpm)
Tilt angle range	1 – 90° (increment 1°)
Time setting	0 – 250 s
③ Vibration	
Tilt angle range	0 – 5° (increment 1°)
Pause/time setting range	0 – 5 s
General Technical Data	
Digital time setting	1 min – 24 h/non-stop (increment 1 min)
Timer sound signal	Yes
Max. loading	0.5 kg
Overall dimensions (W x D x H)	365 × 195 × 155 mm
Weight	1.7 kg
Input current/power consumption	12 V, 660 mA/8 W
External power supply	Input AC 100–240 V 50/60 Hz; Output DC 12 V



Accessories - MultiBio RS-24

Rack Series PRS

Series platforms are equipped with universal rubber clamps for different size tube fixation.

Rack Series PRSC

Series platforms have metal clamps able to hold heavier solutions (e.g. soil, sand).

Optional Platforms



PRS-26
Max. capacity:
26 tubes
with \varnothing 10 – 16 mm
Volume:
1.5 up to 15 ml tubes
Order No.: 105.2383



PRS-1DP
Platform for microplates
and racks for tall tubes
0.5 and 1 ml
(e. g. Thermo 3741MTX,
3742MTX, 3744MTX).
Volume:
0.5 ml and 1 ml
Order No.: 105.2384



PRS-5/12
Max. capacity:
5 and 12 tubes
with \varnothing 20-30 mm and
 \varnothing 10-16 mm
Volume:
Up to 50 ml (5 tubes) and
up to 1.5 – 15 ml
(12 tubes)
Order No.: 105.2381



M-8/50
Max. capacity:
8 tubes
with \varnothing 20 – 30 mm
Volume:
Up to 50 ml
Order No.: 105.2385



PRS-10
Max. capacity:
10 tubes
with \varnothing 20 – 30 mm
Volume:
Up to 50 ml
Order No.: 105.2382



RP-8/15
Max. capacity:
8 tubes
Volume: 15 ml
Applications:
Sample preparation,
cultivation of cell
cultures, immuno-
precipitation tests
and molecular biology
experiments



PRSC-22
Max. capacity:
22 tubes
with \varnothing 25 – 30 mm
Volume:
Up to 15 ml
Order No.: 105.2387



RP-8/50
Max. capacity:
8 tubes
Volume: 50 ml
Applications:
Sample preparation,
cultivation of cell
cultures, immuno-
precipitation tests
and molecular biology
experiments



**PRSC-10
(with metal clamps)**
Max. capacity:
10 tubes
with \varnothing 20 – 30 mm
Volume:
Up to 50 ml
Order No.: 105.2386